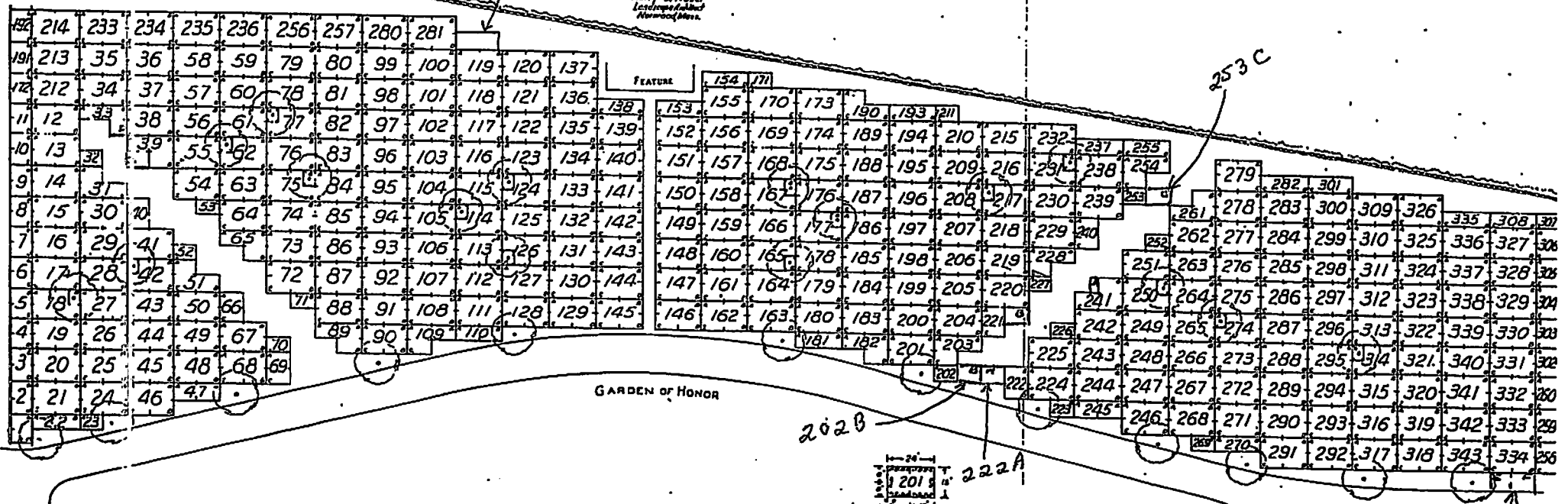


GARDEN OF VALOR I

THERE IS A VICTORY IN DYING WELL FOR
 FREEDOM - AND YE HAVE NOT DIED IN VAIN.
 Campbell 15 The Spanish War 1913.
 WORCESTER COUNTY MEMORIAL PARK
 PAXTON, MASS.
 August 1968
 Scale 1" = 20' Plan No. 313-1-3
 Harry C. Pinner
 Landscape Architect
 Worcester, Mass.

28/D
 51, 1, 8

253 C



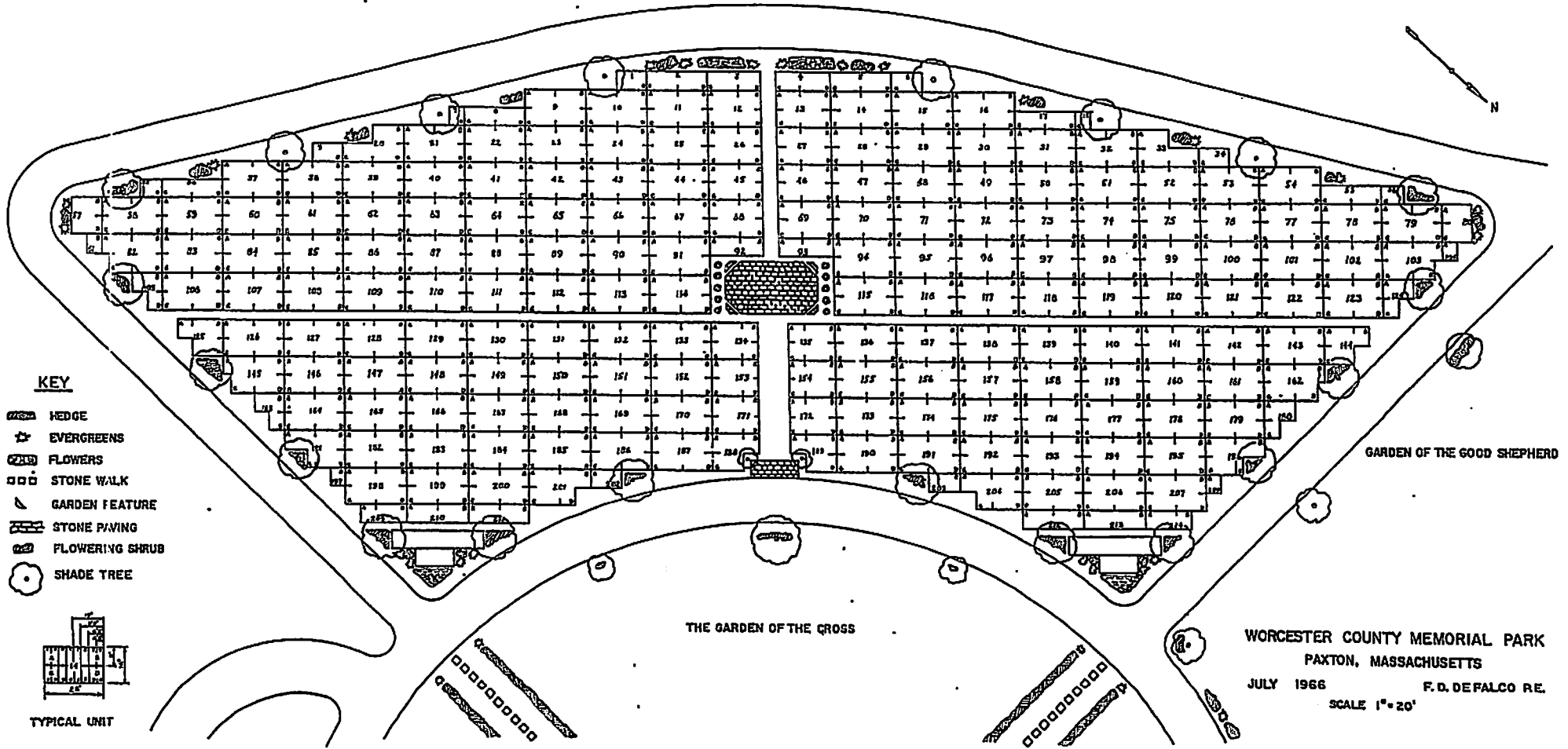
202 B

222 A

334
 E+F

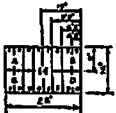
Legend:
 - 26' -
 201'
 12'
 Typical Unit

GARDEN OF HONOR



KEY

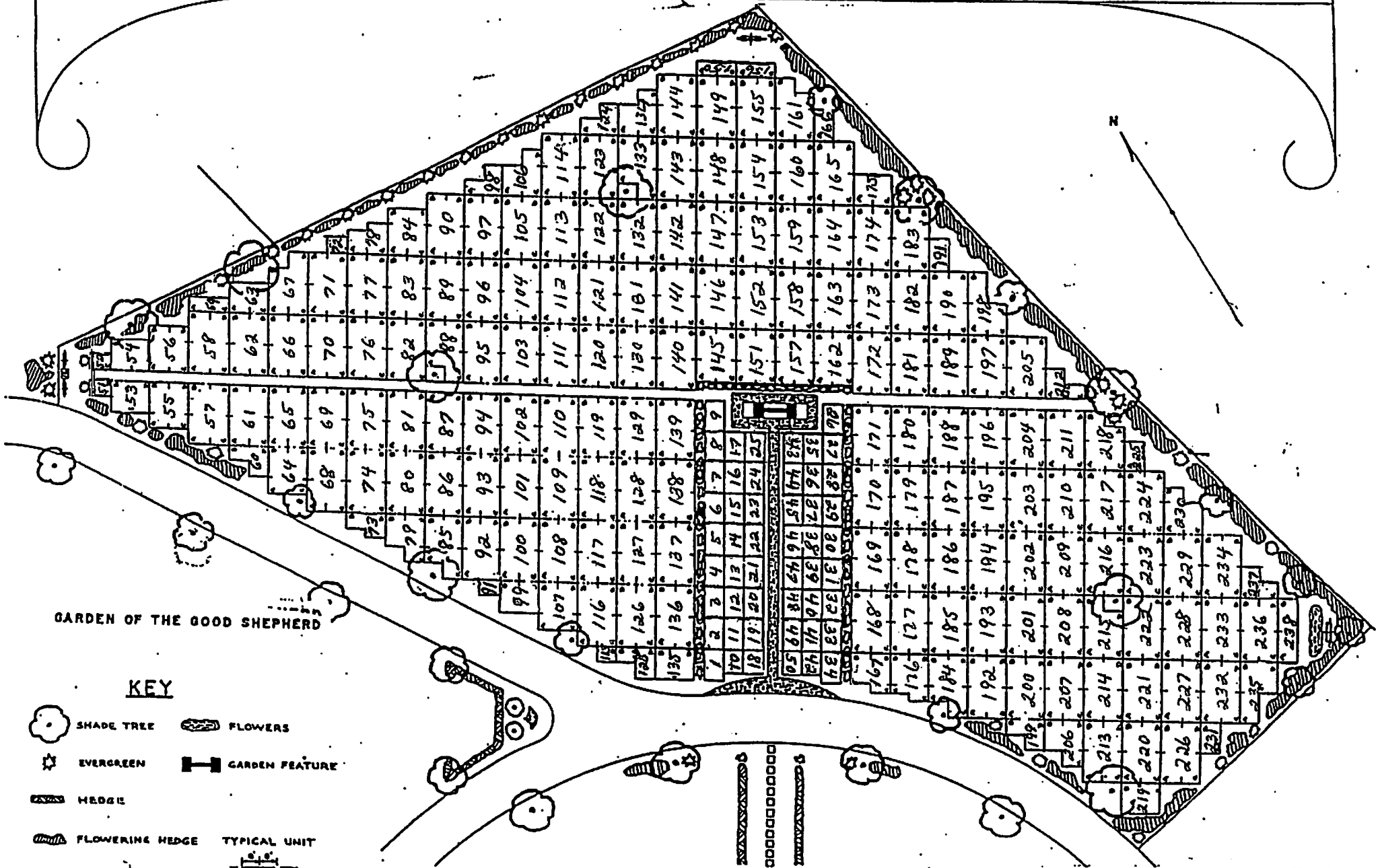
-  HEDGE
-  EVERGREENS
-  FLOWERS
-  STONE WALK
-  GARDEN FEATURE
-  STONE PAVING
-  FLOWERING SHRUB
-  SHADE TREE



TYPICAL UNIT









WORCESTER COUNTY MEMORIAL PARK
 PAXTON, MASSACHUSETTS
 JULY 1966 F. D. DEFALCO R.E.
 SCALE 1" = 20'

GARDEN of PRAYER



GARDEN OF THE GOOD SHEPHERD

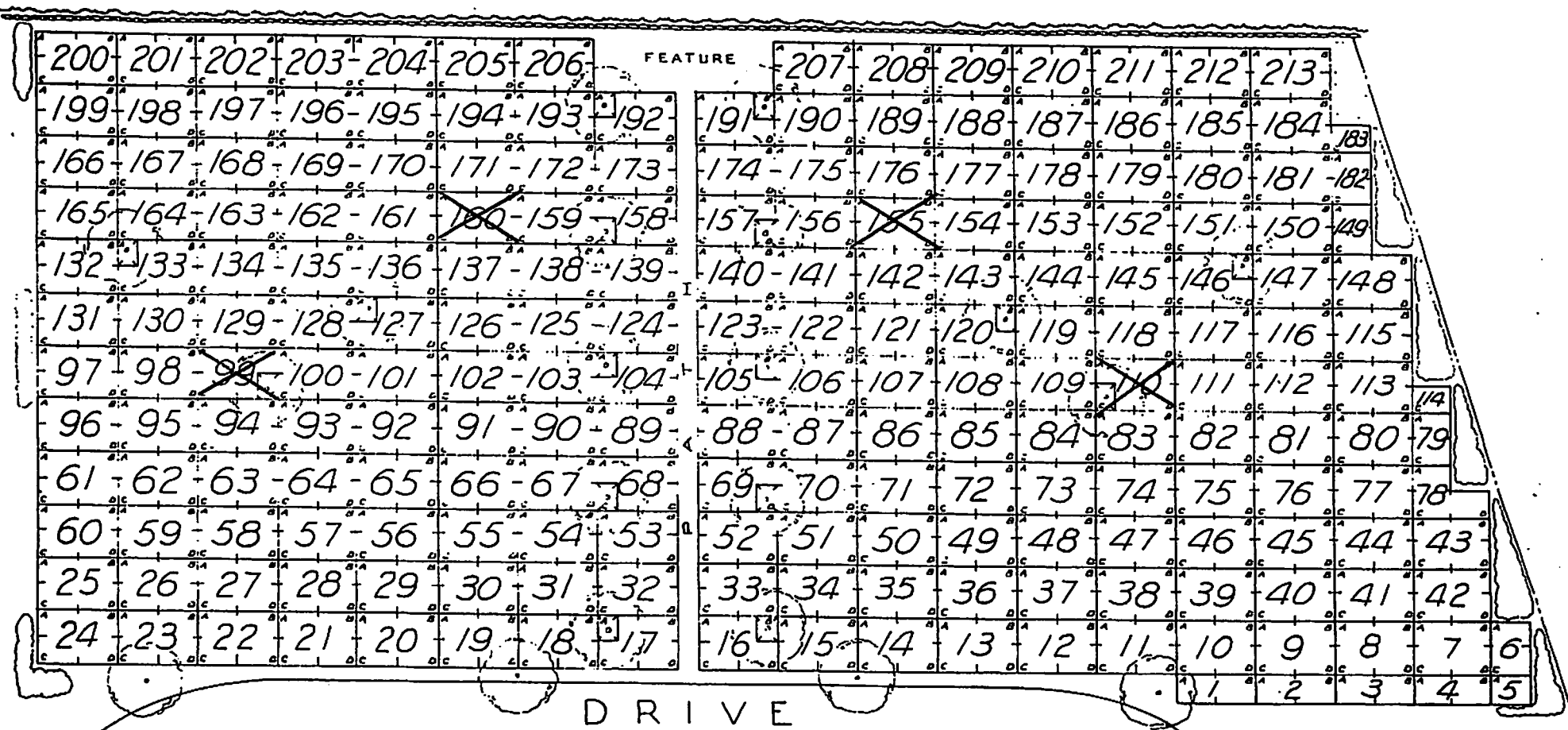
KEY

-  SHADE TREE
-  EVERGREEN
-  HEDGE
-  FLOWERING HEDGE
-  GARDEN SEAT
-  FLOWERS
-  GARDEN FEATURE
-  TYPICAL UNIT

GARDEN OF THE CROSS

WORCESTER COUNTY MEMORIAL PARK

GARDEN OF THE GOSPELS



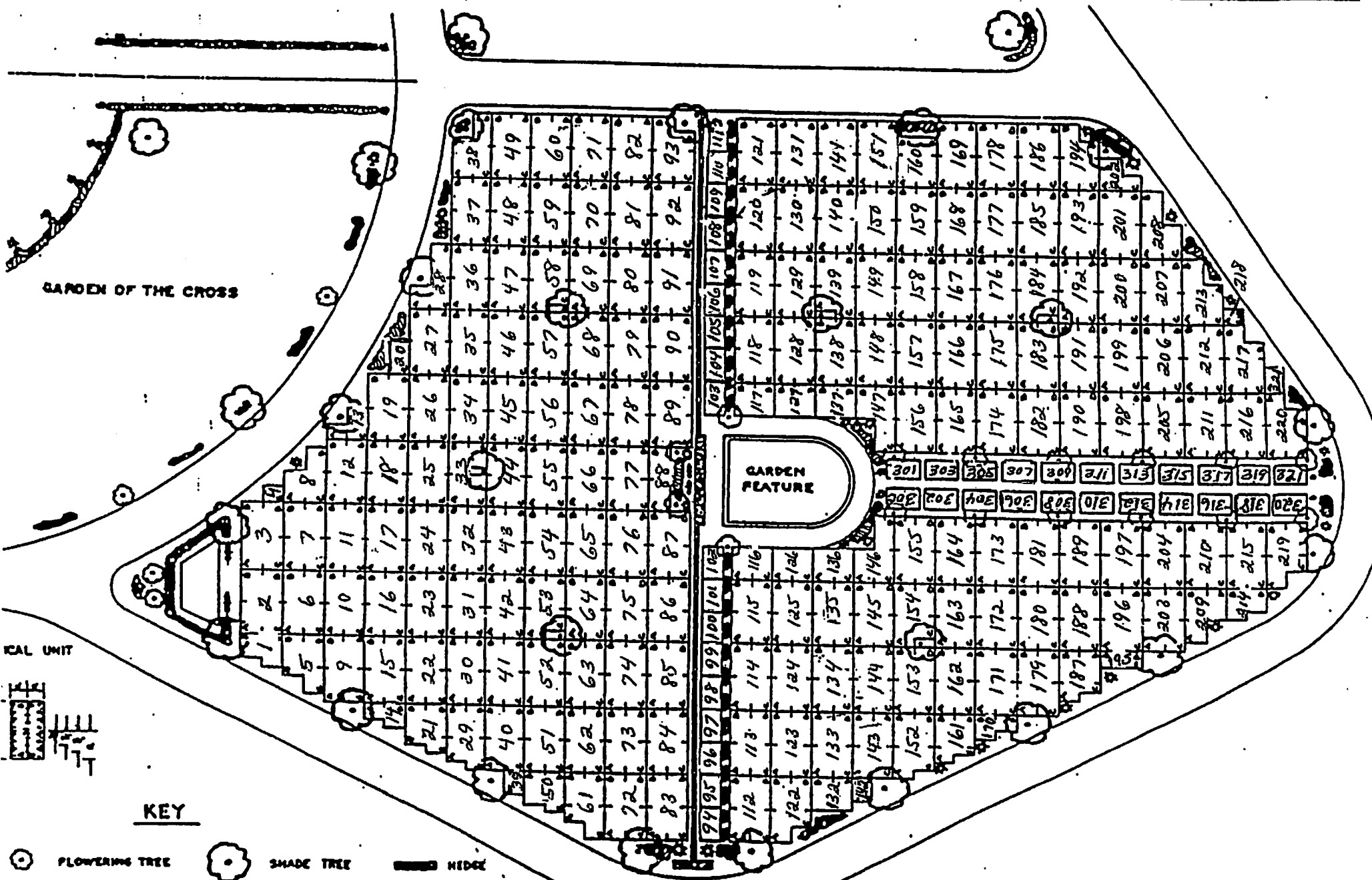
WORCESTER COUNTY MEMORIAL PARK
PAXTON, MASS.

July 1969

Scale 1" = 20'
Harry E. Fraser
Landscape Architect
Norwood, Mass.

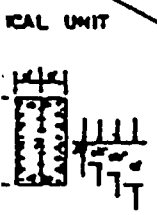
Plan No. 314-4

GARDEN OF THE GOOD SHEPHERD






GARDEN OF THE CROSS

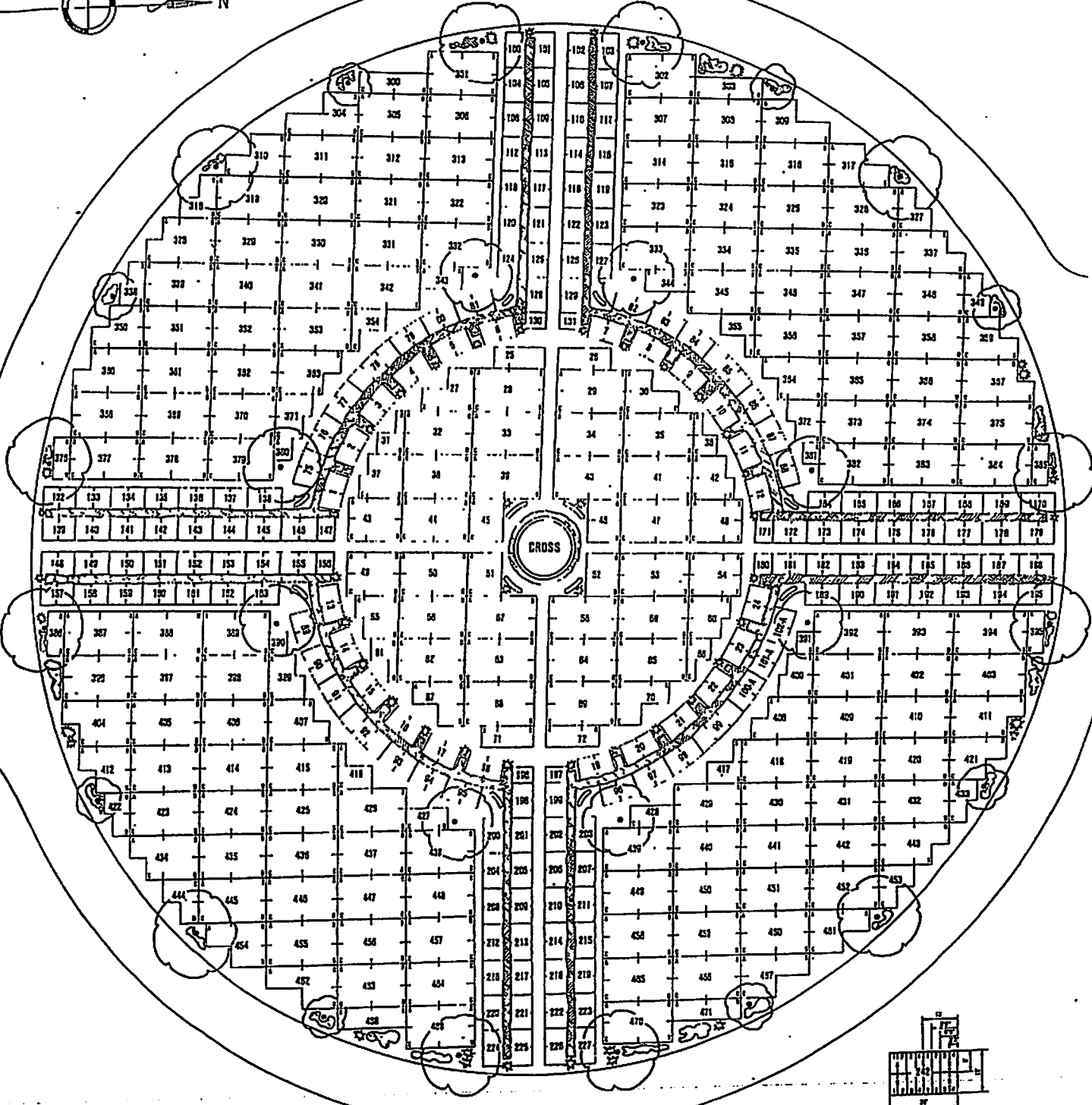
GARDEN FEATURE



KEY

-  FLOWERING TREE
-  SHADE TREE
-  HEDGE
-  EVERGREEN
-  FLOWERING HEDGE

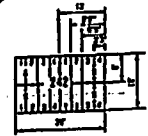
THE GARDEN OF THE CROSS



KEY

- SHADE TREE
- EVERGREENS
- FLOWERS
- HEDGE
- FLOWERING SHRUB
- GARDEN SEATS

TYPICAL UNIT



WORCESTER COUNTY MEMORIAL PARK
 PAXTON, MASSACHUSETTS
 JANUARY 1963
 SCALE: 1" = 20'
 E. D. DEFALCO C. ENG & REG. LAND SURVEYOR